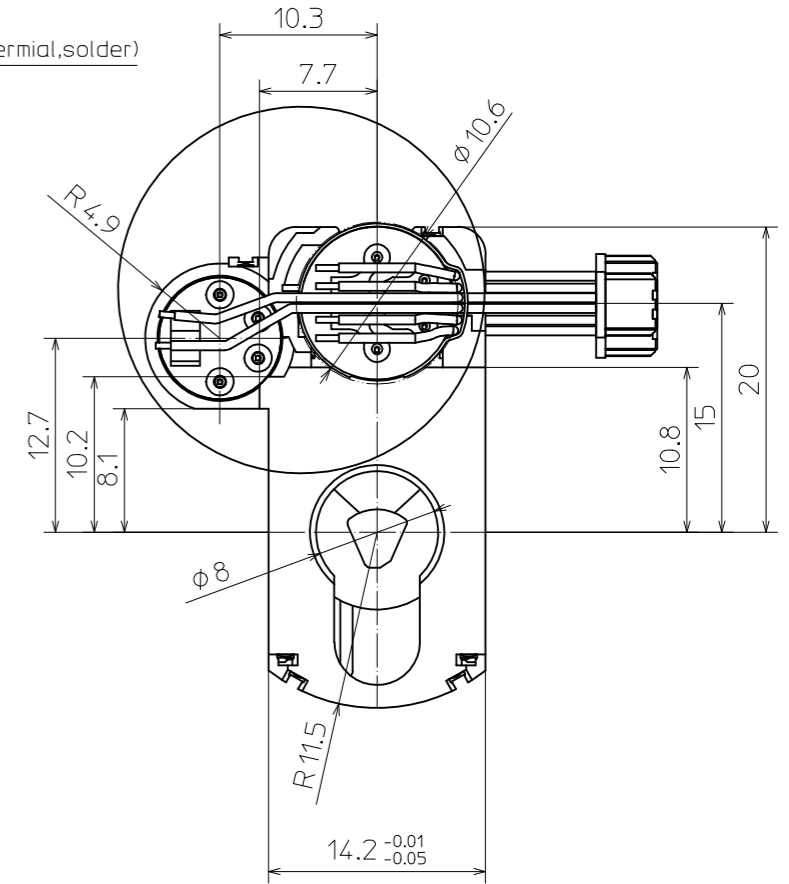
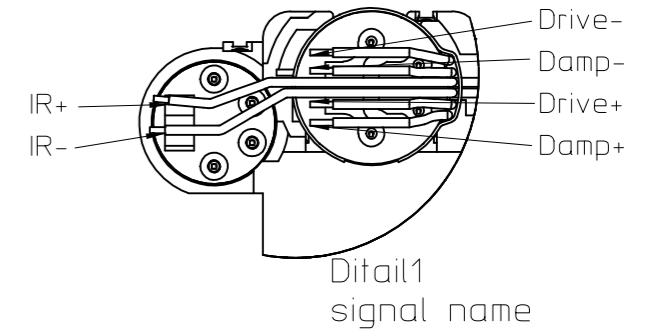
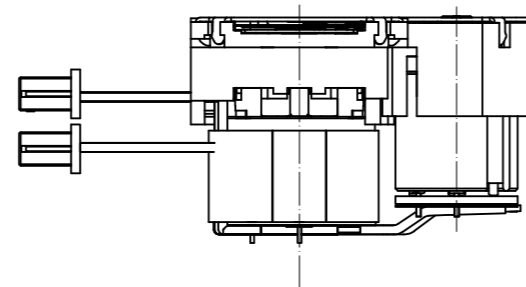
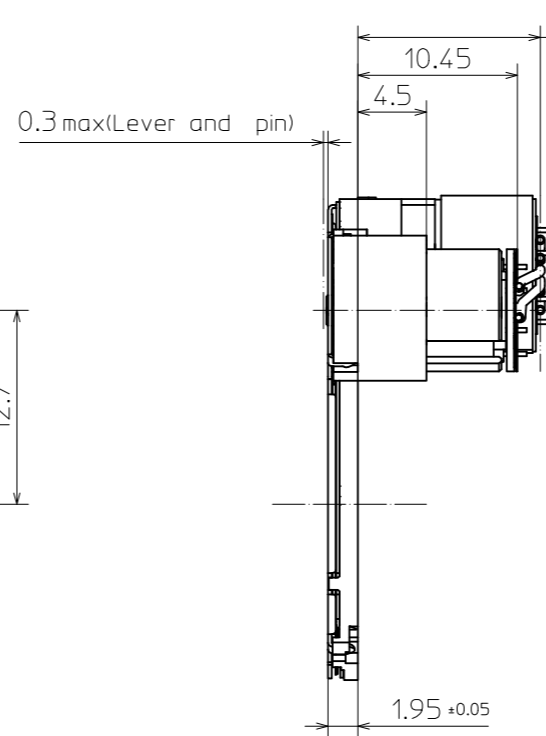
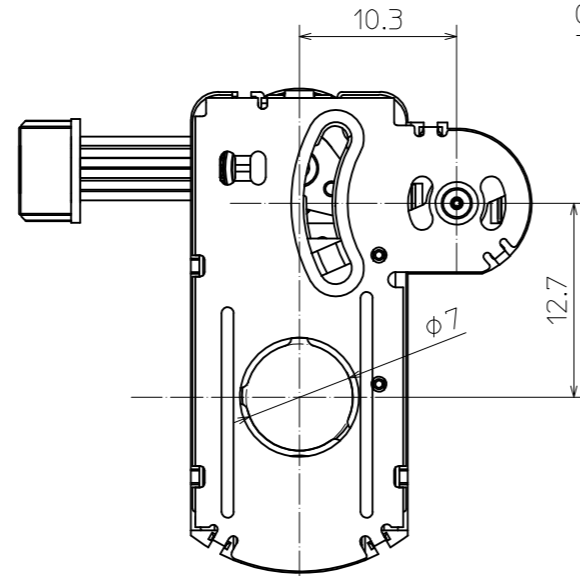
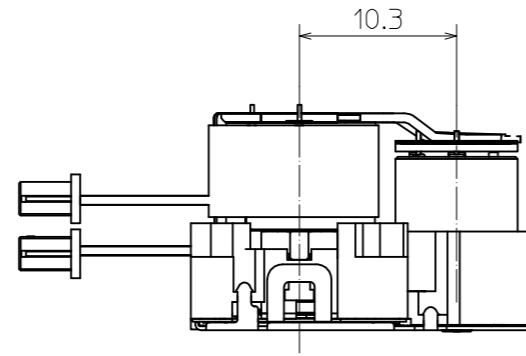
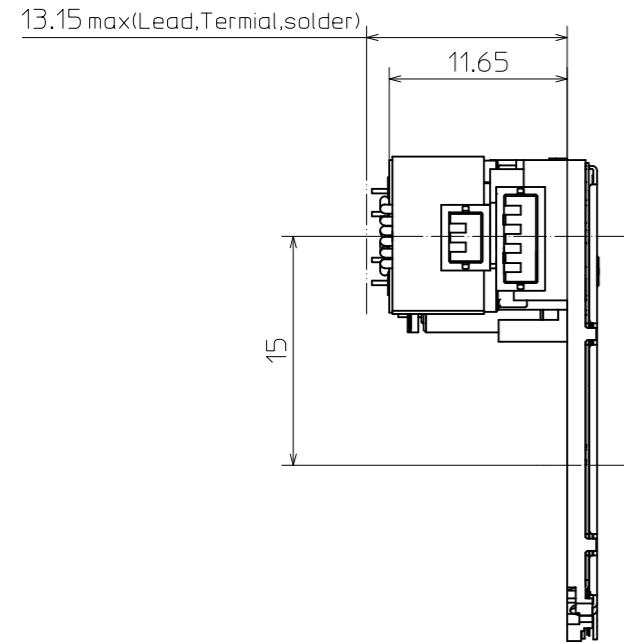


2. Radii to be R0.5 max unless otherwise specified.

1. Unless otherwise specified dimension are in millimeters tolerances on ± 0.1 , angle $\pm 1^\circ$.

Note



*Please specify the attachment method to a lens unit of a visitor.

SURFACE TREATMENT		ANNEAL		SURFACE ROUGHNESS 1.6/ ∇		SCALE 2:1	
						MATERIAL	
				DATE		NAME	
				DRAWN		MODEL-NAME	
				EXAM.		N70DND	
				APPR.			
				New Asia		DRAWING-NUMBER	
				Optical Industry		NA04-0000 /01	
INDEX	DESCRIPTION	DATE	NAME			SHEET	
						OF	