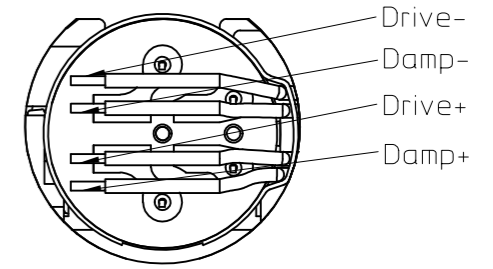
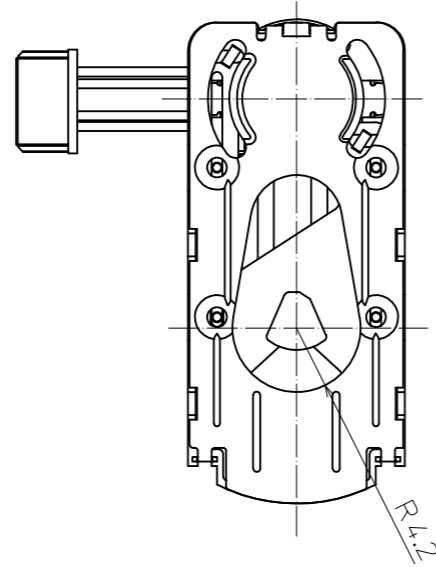
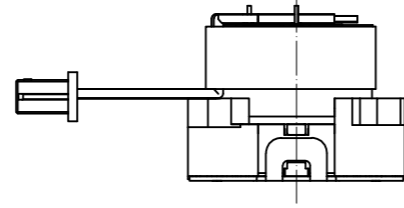


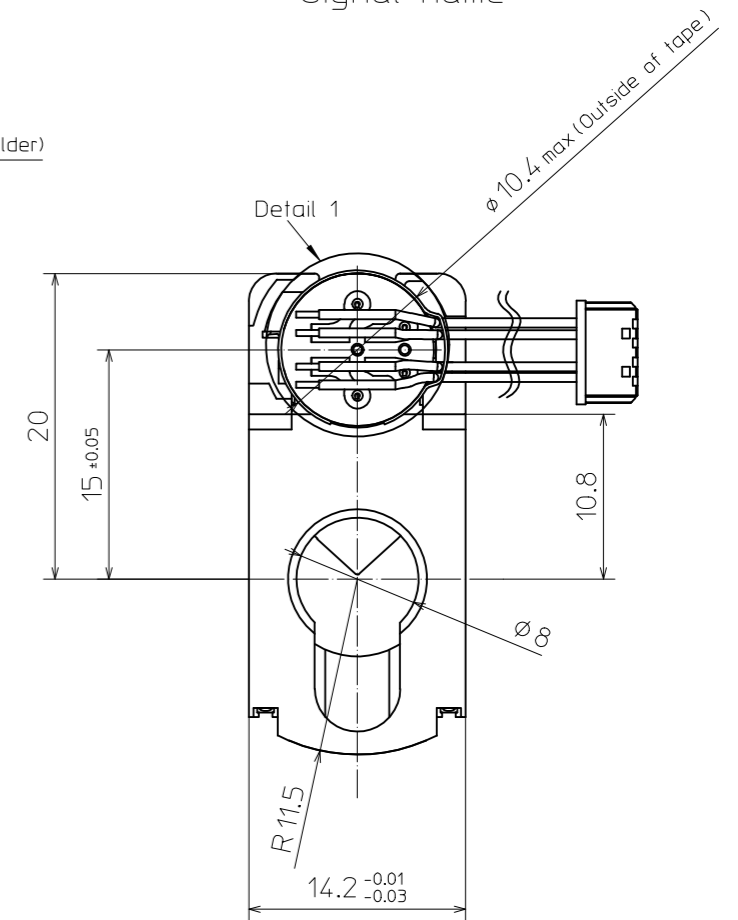
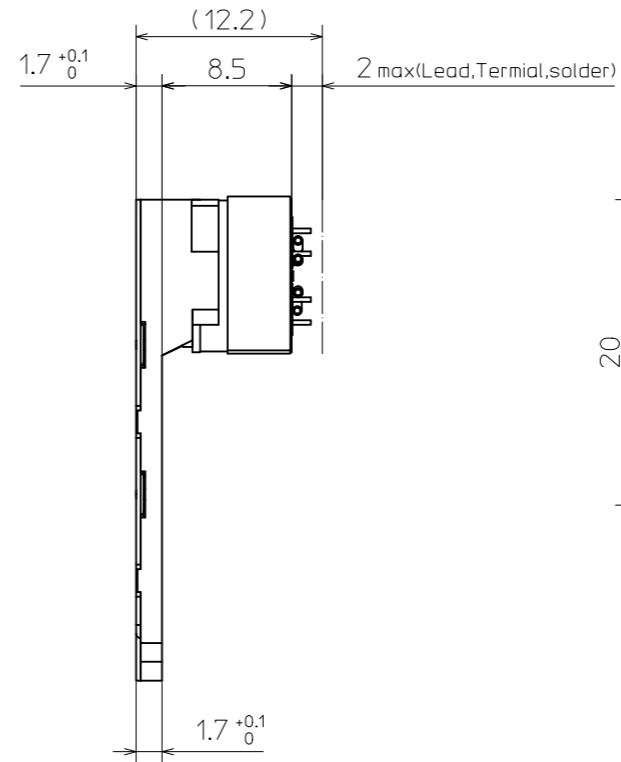
2. Radii to be R0.5 max unless otherwise specified.

1. Unless otherwise specified dimension are in millimeters tolerances on ± 0.1 , angle $\pm 1^\circ$.

Note



Detail 1
Signal name



*Please specify the attachment method to a lens unit of a visitor.

SURFACE TREATMENT				ANNEAL		SURFACE ROUGHNESS		SCALE 2:1	
								MATERIAL	
				DATE		NAME		MODEL-NAME	
				DRAWN				N78DCS	
				EXAM.					
				APPR.					
						New Asia		DRAWING-NUMBER	
						Optical Industry		NA01-0000-Ap /01	
INDEX DESCRIPTION				DATE		NAME		SHEET	
								OF	