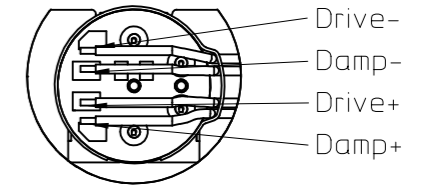
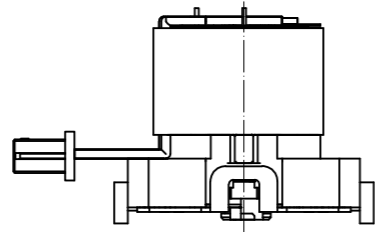


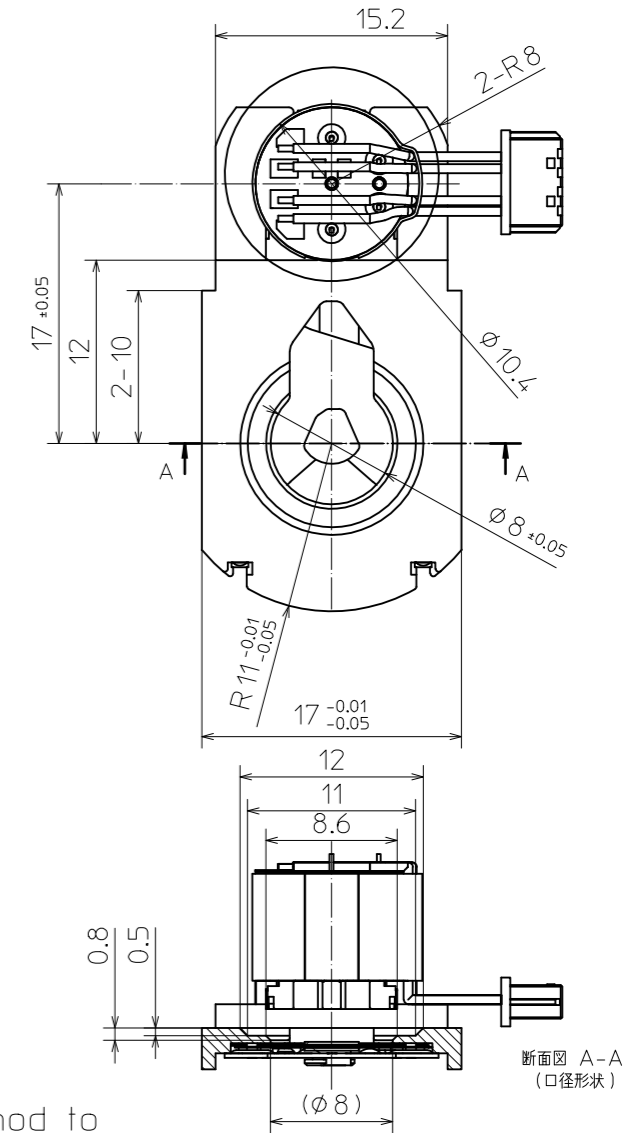
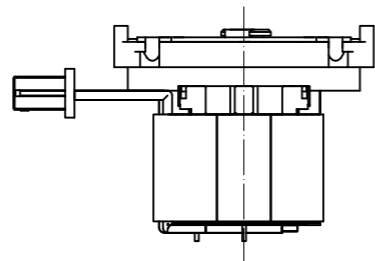
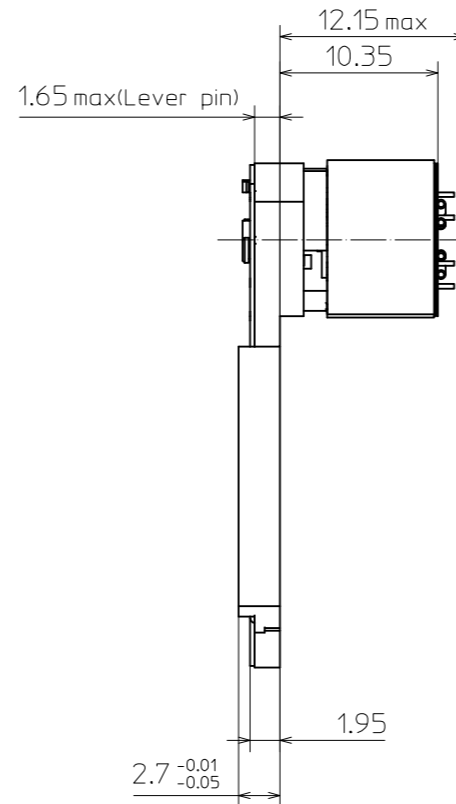
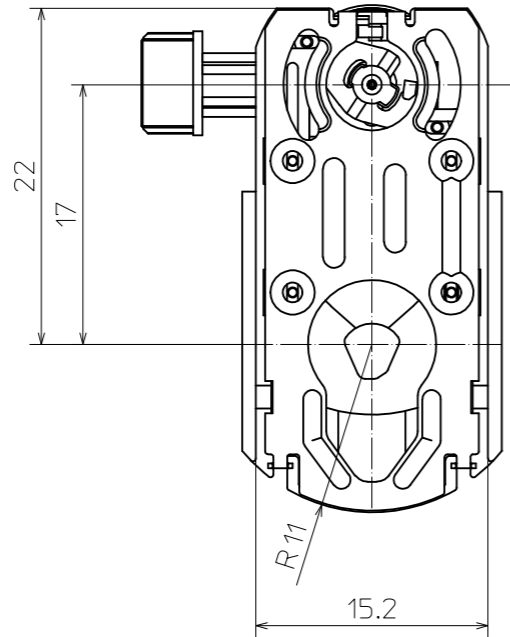
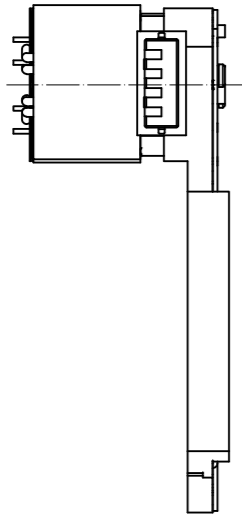
2. Radii to be R0.5 max unless otherwise specified.

1. Unless otherwise specified dimension are in millimeters tolerances on  $\pm 0.1$ , angle  $\pm 1^\circ$ .

Note



Detail 1  
signal name



\*Please specify the attachment method to a lens unit of a visitor.

SURFACE TREATMENT			ANNEAL		SURFACE ROUGHNESS		SCALE 2:1	
							MATERIAL	
			DATE		NAME		MODEL-NAME	
			DRAWN				N80DC	
			EXAM.					
			APPR.					
					New Asia		DRAWING-NUMBER	
					Optical Industry		NA01-0000-Ap/01	
INDEX DESCRIPTION			DATE		NAME		SHEET	
							OF	