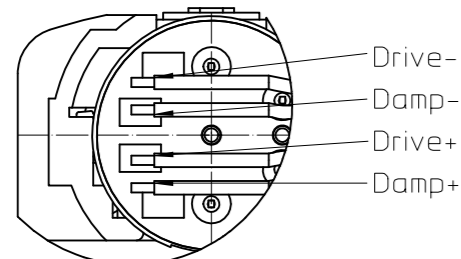
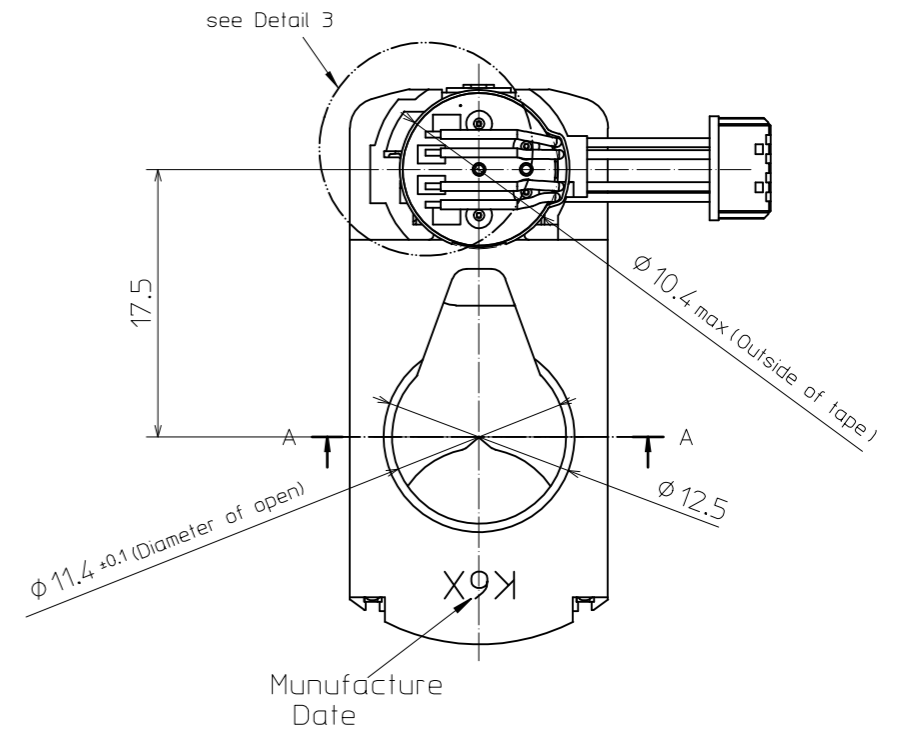
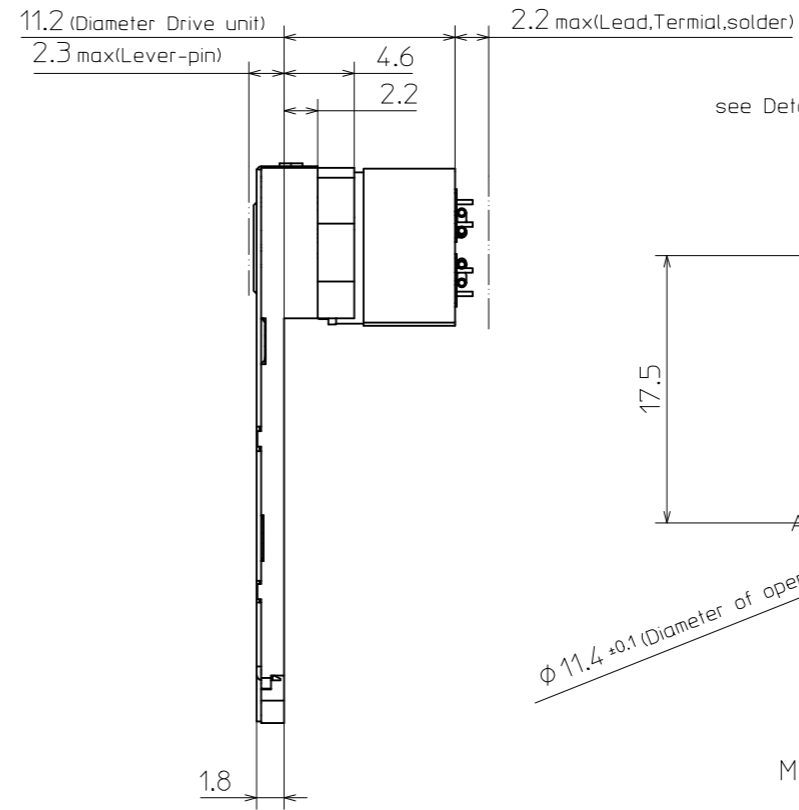
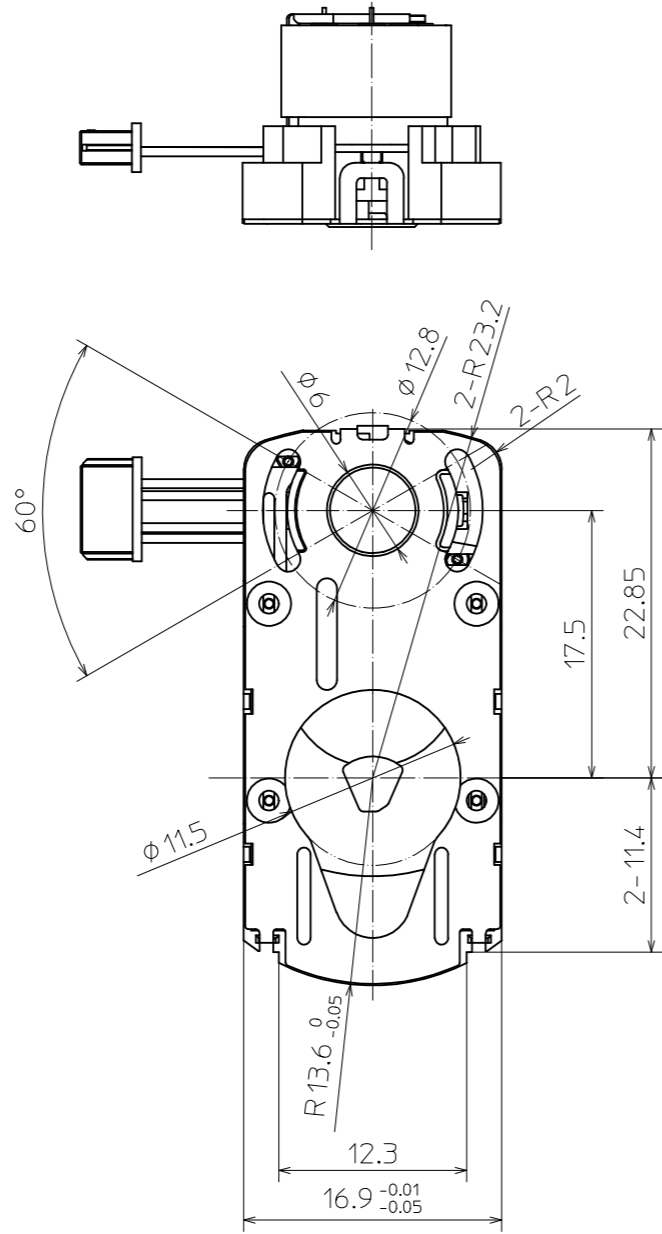
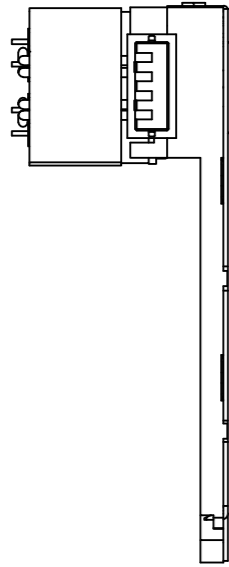


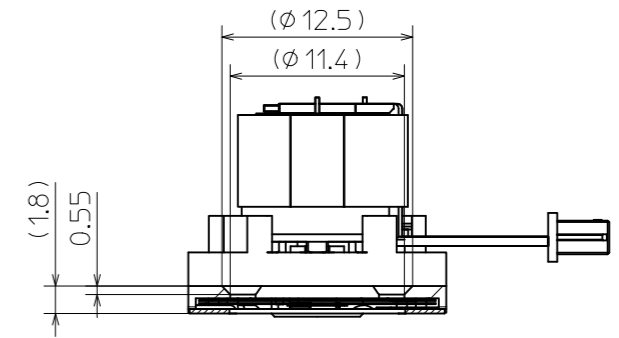
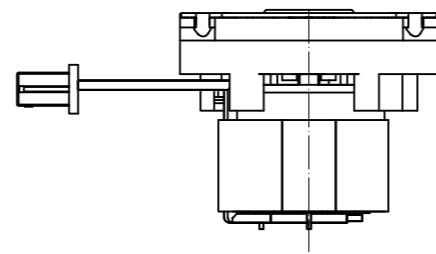
2. Radii to be R0.5 max unless otherwise specified.

1. Unless otherwise specified dimension are in millimeters tolerances on ± 0.1 , angle $\pm 1^\circ$.

Note



Detail 3
SCALE 3:1



Section A-A

*Please specify the attachment method to a lens unit of a visitor.

SURFACE TREATMENT		ANNEAL		SURFACE ROUGHNESS		SCALE 2:1	
						MATERIAL	
						MODEL-NAME	
						N114DCL	
						DRAWING-NUMBER	
						NA01-0000 -Ap/01	
INDEX DESCRIPTION		DATE NAME		New Asia Optical Industry		SHEET OF	